



51 George Avenue

, Peterlee, SR8 3NG

Offers In The Region Of £130,000

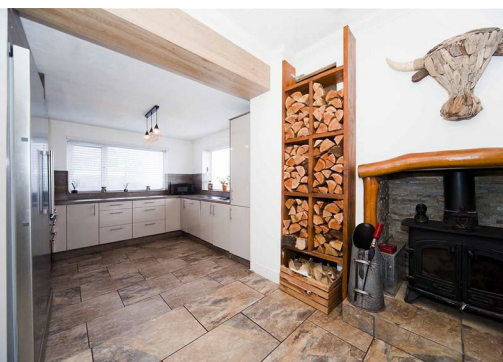


Nestled on George Avenue in Easington, Peterlee, this stunning end-terrace house presents an exceptional opportunity for first-time buyers. The property has been thoughtfully remodelled, offering a modern and inviting atmosphere throughout.

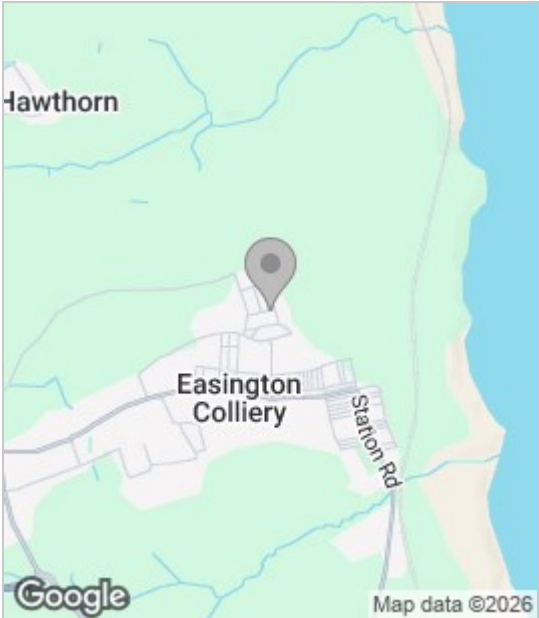
As you enter, you are greeted by a spacious open-plan kitchen and family room, complete with a multi-fuel burning stove, perfect for cosy evenings with loved ones. The two reception rooms provide ample space for relaxation and entertaining, ensuring that this home is as functional as it is stylish.

The property boasts three generously sized bedrooms, each offering a comfortable retreat for rest and relaxation. The well-appointed bathroom adds to the convenience of this delightful home.

Outside, the private front garden has been upgraded with an elegant Indian sandstone patio, creating a lovely space for outdoor gatherings. The rear of the property features a resin driveway that accommodates two vehicles, along with a garage for additional storage or parking needs.



Area Map



Floor Plan



Energy Efficiency Graph



These particulars, whilst believed to be accurate are set out as a general outline only for guidance and do not constitute any part of an offer or contract. Intending purchasers should not rely on them as statements of representation of fact, but must satisfy themselves by inspection or otherwise as to their accuracy. No person in this firms employment has the authority to make or give any representation or warranty in respect of the property.